

## AV-263 Cast Iron Pilot Operated Pressure Reducing Valve, Flanged Ends

### Features

Body Material Cum Standard	Cast Iron (IBR 86 to 93 Gr. A)
Product Description	Pilot Operated, Outlet Pressure Range available 5/45, 40/100, 90/125 Psig
Type of Seat	Renewable Seat
Trim	13% Cr. (SS 410) + Stellite Facing
End Details	Flanged Ends as per BS-10 Table-F Flat Face (Undrilled)
Test Pressure	Body: 300 Psig (Hyd.)
Max. Working Pressure	150 Psig (Steam)
Max. Working Temperature	220°C

### Notes

Test Certificate in Form III-C as per IBR is furnished with every supply.

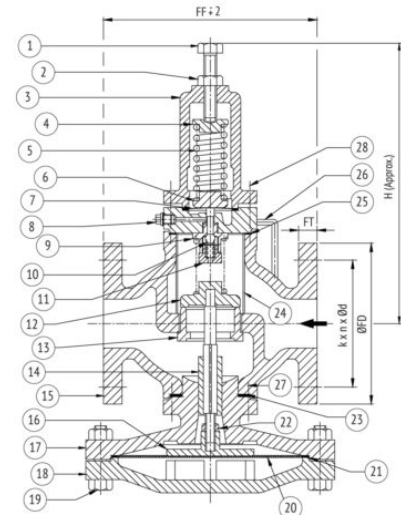
### Suitability

Steam



### Material Combination

S.No	Description	No.	Material
1,2	Adjusting Screw, Locking Nut	1	Carbon Steel
3	Spring Housing	1	S.G.I.
4, 6	Spring Top Disc, Spring Bottom Disc	1	Stainless Steel
5, 7	Pressure Adjusting Spring, Diaphragm	1	Stainless Steel
8	Side Plug	1	Stainless Steel
9, 10	Pilot Valve Body, Ball	1	Stainless Steel
11	Pilot Valve Spring Retaining Check Nut	1	Stainless Steel
12, 13	Main Valve Disc, Body Seat Ring	1	Stainless Steel
14	Push Rod Guide Sleeve	1	Stainless Steel
15	Main Valve Body	1	Cast Iron
16	Main Diaphragm Disc	1	G.M. / S.S.
17, 18	Half Upper Cover, Half Lower Cover	1	Cast Iron
19	Bolts & Nuts	To Suit	Carbon Steel
20	Diaphragm	1	Stainless Steel
21, 23	Gasket	1	C.A.F.
22	Push Rod Lock Nut	1	Stainless Steel
24	Strainer Screen	1	Stainless Steel
25	Gasket	1	C.A.F.
26	By Pass Assy.	-	-
27, 28	Studs & Nuts	To Suit	Carbon Steel



### Dimensional Data

Size (mm)	FF	H	ØFD	FT	k	n	Ød
25	165	215	120.7	12.7	87.3	4	17.5
40	203	245	139.7	15.9	104.8	4	17.5
50	248	295	165.1	19.1	127	4	17.5