

AV-276 Cast Carbon Steel Globe Steam Stop Valve, Flanged Ends, PN-40

Features

Product Standard	BS EN-13709
Testing Standard	BS EN 12266-Part 1
Pressure / Class Rating	PN-40
Body Material Cum Standard	Cast Carbon Steel (ASTM A216 Gr. WCB)
Product Description	Bolted Bonnet, Outside Screw & Yoke Type, Rising Stem with Backseat Arrangement, Handwheel Operated
Type of Seat	Renewable Seat
Type of Disc	Renewable Disc
Trim	13% Cr. (SS 410)
End Details	Flanged Ends as per BS EN 1092-1 PN-40 Raised Face (Drilled)
Test Pressure	Body: 60 Bar (Hyd.), Seat & Back Seat: 44 Bar (Hyd.)
Max. Working Temperature	400°C



Notes

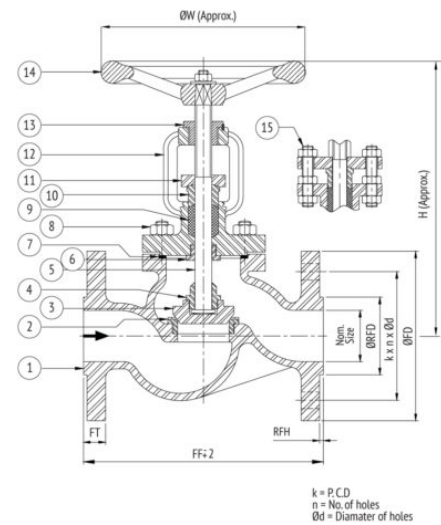
Test Certificate in Form III-C as per IBR is furnished with every supply.

Suitability

Water, Steam, Oil

Material Combination

S.No	Description	No.	Material
1	Body	1	C.C.S
2	Body Seat Ring	1	Stainless Steel
3	Disc	1	Stainless Steel
4	Disc Nut	1	Stainless Steel
5	Stem	1	Stainless Steel
6	Back Seat Bush	1	Stainless Steel
7	Gasket	1	Non Asbestos
8	Studs & Nuts	To Suit	Carbon Steel
9	Packing	-	Flexible Graphite
10	Gland	1	Stainless Steel
11	Gland Flange	1	C.C.S.
12	Bonnet	1	C.C.S.
13	Yoke Bush	1	Stainless Steel / Al. Bronze
14	handwheel	1	C.I. / M.I.
15	Studs & Nuts	2 & 6	Carbon Steel



Dimensional Data

Size (mm)	FF	ØFD	ØRFD	RFH	k	n	Ød	FT	ØW	H
15	130	95	45	2	65	4	14	16	125	215
20	150	115	58	2	82.6	4	17.5	18	125	224
25	160	115	68	2	87.3	4	17.5	18	160	240
32	180	140	78	2	98.4	4	17.5	18	160	297
40	200	150	88	3	104.8	4	17.5	18	200	322
50	230	165	102	3	127	4	17.5	20	200	348
65	290	185	122	3	146.1	8	17.5	22	250	412
80	310	200	138	3	165.1	8	17.5	24	250	450
100	350	235	162	3	190.5	8	17.5	24	315	529
125	400	280	188	3	235	8	22.3	26	315	600
150	480	300	218	3	260.4	12	22.3	28	400	690

Size (mm)	FF	ØFD	ØRFD	RFH	k	n	Ød	FT	ØW	H
200	600	375	285	3	324	12	22.3	34	450	832
250	730	450	345	3	381	12	25.4	38	450	-