

## AV-504 Investment Casting Stainless Steel (CF8) Butterfly Handle Ball Valve, Screwed Ends, PN-40



### Features

Pressure / Class Rating	PN-40
Body Material Cum Standard	Cast Stainless Steel (ASTM A351 Gr. CF8)
Port Opening	Full Bore
Product Description	Two Piece Design, Butterfly Handle Operated (Blow Out Proof Stem)
Type of Seat	Renewable Seat
Trim	Ball & Stem: Stainless Steel (AISI 304), PTFE Seats
End Details	Screwed Female BSP Parallel Threads (BS-21)
Test Pressure	Body: 60 Bar (Hyd.), Seat: 7 Bar (Air)

### Notes

Other screwed end specifications can be provided on request.

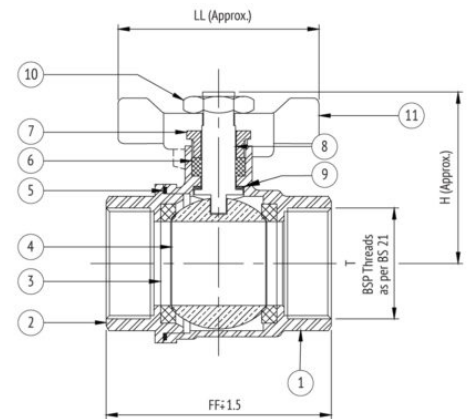
### Suitability

Water, Gas, Oil, Air



### Material Combination

S.No	Description	No.	Material
1	Body	1	Cast Stainless Steel
2	Connector	1	Cast Stainless Steel
3	Seat	2	PTFE
4	Ball	1	Cast Stainless Steel
5	Gasket	1	PTFE
6	Packing	-	PTFE
7	Gland Nut	1	Stainless Steel
8	Stem	1	Stainless Steel
9	Stem Seal	1	PTFE
10	Stem Nut	1	Stainless Steel
11	Handle	1	Aluminium



### Dimensional Data

Size (mm)	FF	H	LL	T
8	48	40	50	1/4"
10	48	40	50	3/8"
15	56	43	50	1/2"