

FV-509 Investment Casting Stainless Steel (CF8M) Ball Valve, Flanged Ends, Class-150

Features

Testing Standard	BS EN 12266-Part 1
Pressure / Class Rating	Class-150
Body Material Cum Standard	Cast Stainless Steel (ASTM A351 Gr. CF8M)
Port Opening	Full Bore
Product Description	Three Piece Design, Lever Operated (Blow Out Proof Stem)
Type of Seat	Renewable Seat
Trim	Ball & Stem: Stainless Steel (AISI 316), PTFE Seats
End Details	Flanged Ends as per ASME B16.5 (Class-150) Raised Face (Drilled)
Test Pressure	Body: 30 Bar (Hyd.), Seat: 22 Bar (Hyd.), Seat: 7 Bar (Air)
Application Medium	Nitric Acid, Acetic Acid



Notes

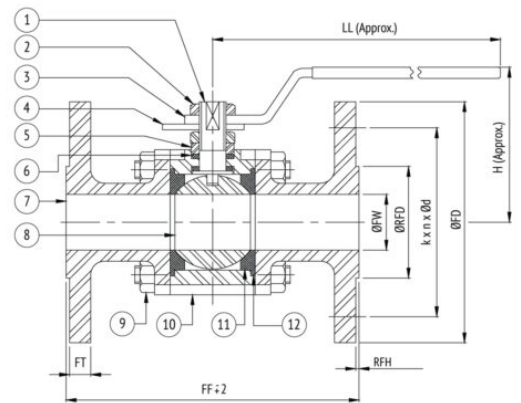
Suitable for steam service with specialized PTFE.
Can be provided with Glass Filled PTFE, Graphite Blended PTFE & PEEK Seats on request.

Suitability

Water, Steam, Gas, Oil, Air

Material Combination

S.No	Description	No.	Material
1	Stem	1	Stainless Steel
2	Nut	1	Stainless Steel
3	Lever (with Plastic Sleeve)	1	Carbon Steel
4	Stopper	1	Carbon Steel
5	Gland	1	Stainless Steel
6	Packing Ring	-	PTFE
7	Body Connector	2	Cast Stainless Steel
8	Ball	1	Stainless Steel
9	Stud / Bolts & Nuts	To Suit	Alloy Steel / H.T. Steel
10	Body	1	Cast Stainless Steel
11	Seat	2	PTFE
12	Gasket	2	PTFE



k = P.C.D
n = No. of holes
Ød = Diameter of holes

Dimensional Data

Size (mm)	FF	FT	ØFW	ØRFD	RFH	ØFD	K	n	ØD	LL	H
15	108	8	11	34.9	2	90	60.3	4	5/8"	167	55
20	117	8.9	17	42.9	2	100	69.9	4	5/8"	167	60
25	127	9.6	23	50.8	2	110	79.4	4	5/8"	180	72
40	165	12.7	37	73	2	125	98.4	4	5/8"	206	90
50	178	14.3	49	92.1	2	150	120.7	4	3/4"	230	100
65	190	15.9	62	104.8	2	180	139.7	4	3/4"	400	155
80	203	17.5	74	127	2	190	152.4	4	3/4"	400	175
100	229	22.3	98	157.2	2	230	190.5	8	3/4"	450	195