

AV-235 Bronze Safety Valve, Flanged Ends

Features

Type of Pattern	Right Angle Pattern
Body Material Cum Standard	Bronze (IBR 282 (a) (iv) Gr. B)
Product Description	Pop Type, Spring Loaded, Enclosed Discharge
Trim	Cu-Alloy
End Details	Flanged Ends as per BS-10 Table-H Flat Face (Undrilled)
Test Pressure	Body: 500 Psig (Hyd.)
Max. Working Pressure	250 Psig (Steam)
Max. Working Temperature	225°C
Max. Set Pressure	250 Psig (Steam)

Notes

Test Certificate in Form III-C as per IBR is furnished with every supply.

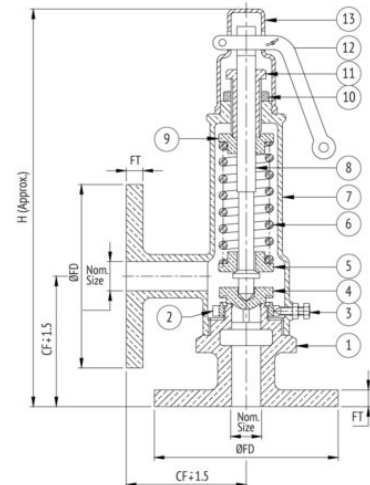
Suitability

Water, Steam



Material Combination

S.No	Description	No.	Material
1	Body	1	Bronze
2	Regulating Ring	1	Bronze
3	Locking Screw	1	Brass
4	Disc	1	Bronze
5	Lower Spring Disc	1	Bronze
6	Spring	1	Carbon Steel
7	Spring Chamber	1	Bronze
8	Stem	1	H.T. Brass
9	Upper Spring Disc	1	Bronze
10	Check Nut	1	Bronze
11	Adjusting Screw	1	Bronze
12	Lever	1	Carbon Steel
13	Cap	1	Aluminium



Dimensional Data

Size (mm)	CF	CF1	H	ØFD	FT
15	70	66	287	114.3	9.5
20	74	73	324	114.3	9.5
25	74	75	325	120.7	11.1
32	83	93	398	133.4	11.1
40	83	95	400	139.7	12.7
50	111	110	451	165.1	12.7