

AV-268 Investment Casting Stainless Steel (CF8) Non Slam Check Valve, PN-10/16, Class-150

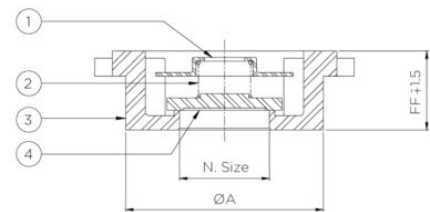
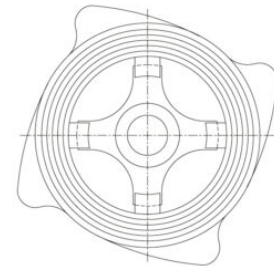
Features

Body Material Cum Standard	Cast Stainless Steel (ASTM A351 Gr. CF8)
Product Description	Spring Loaded
Trim	Stainless Steel (AISI 304)
End Details	Suitable for insertion between Flanges as per ANSI B16.5 Class-150, BSEN 1092-1 PN-10/PN-16/ BS-10 TABLE-E/F
Test Pressure	Body: 24 Bar (Hyd.), Seat: 17.6 Bar (Hyd.)
Suitability	
Water, Steam, Oil	



Material Combination

S.No	Description	No.	Material
1	Spring Cover	1	Stainless Steel
2	Spring	1	Stainless Steel
3	Body	1	Cast Stainless Steel
4	Disc	1	Stainless Steel



Dimensional Data

Size (mm)	Size (inches)	FF	A
15	1/2"	16	38
20	3/4"	20	47
25	1"	22	54
40	1.1/2"	32	76
50	2"	40	93
80	3"	65	100
100	4"	70	107