

## AV-280 Cast Carbon Steel Globe Steam Stop Valve, Flanged Ends, PN-40

### Features

Type of Pattern	Right Angle Pattern
Product Standard	BS EN-13709
Testing Standard	BS EN 12266-Part 1
Pressure / Class Rating	PN-40
Body Material Cum Standard	Cast Carbon Steel (ASTM A216 Gr. WCB)
Product Description	Bolted Bonnet, Outside Screw & Yoke Type, Rising Stem with Backseat Arrangement, Handwheel Operated
Type of Seat	Renewable Seat
Type of Disc	Renewable Disc
Trim	13% Cr. (SS 410)
End Details	Flanged Ends as per BS EN 1092-1 PN-40 Raised Face (Drilled)
Test Pressure	Body: 60 Bar (Hyd.), Seat: 44 Bar (Hyd.)
Max. Working Temperature	400°C



### Notes

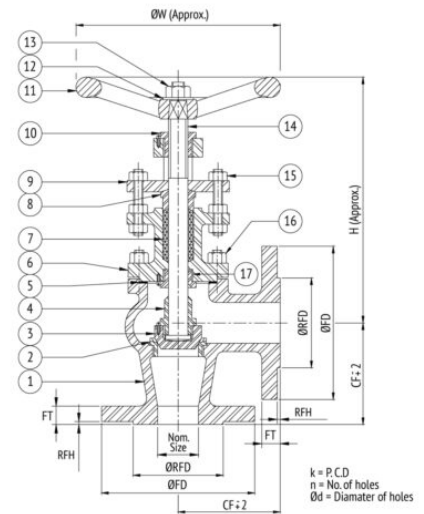
Test Certificate in Form III-C as per IBR is furnished with every supply.

### Suitability

Water, Steam, Oil

### Material Combination

S.No	Description	No.	Material
1	Body	1	C.C.S
2, 3	Body Seat Ring, Disc	1	Stainless Steel
4	Disc Nut	1	Stainless Steel
5	Gasket	1	C.A.F.
6	Bonnet	1	C.C.S
7	Gland Packing	-	Graphited Asbestos
8	Gland Follower	1	Stainless Steel
9	Gland Flange	1	C.C.S
10	Yoke Bush	1	Stainless Steel
11	Handwheel	1	C.I. / M.I.
12	Washer	1	Carbon Steel
13	Nut	1	Carbon Steel
14	Stem	1	Stainless Steel
15	Studs & Nuts	2 & 6	Carbon Steel
16	Studs & Nuts	To Suit	Carbon Steel
17	Back Seat Bushing	1	Stainless Steel



### Dimensional Data

Size (mm)	CF	H	ØW	ØFD	FT	ØRFD	RFH
25	100	210	160	115	18	68	2
32	105	245	160	140	18	78	2
40	115	275	200	150	18	88	3
50	125	275	200	165	20	102	3
65	145	305	250	185	22	122	3
80	155	305	250	200	24	138	3
100	175	360	315	235	24	162	3
125	200	410	315	270	26	188	3
150	225	505	400	300	28	218	3