

AV-123 Bronze Gate Valve, Flanged Ends, Class-2

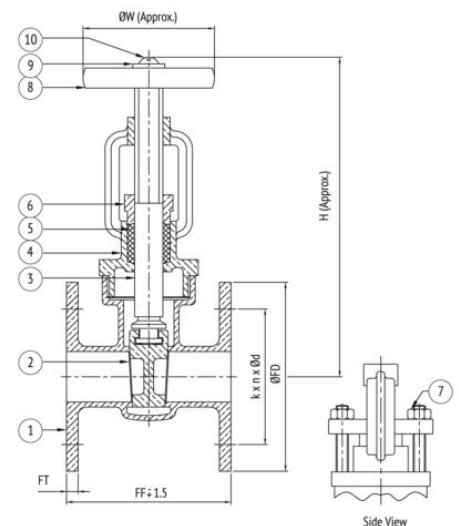
Features

Product Standard	IS-778
Testing Standard	IS-778
Pressure / Class Rating	Class-2
Body Material Cum Standard	Bronze (IS 318 Gr. LTB2)
Product Description	Screwed in Bonnet, Outside Screw & Yoke Type, Rising Stem, Handwheel Operated
Type of Seat	Integral Seat
Type of Wedge	Solid Wedge
Trim	Cu-Alloy
End Details	Flanged Ends as per IS:778 Class-2 Flat Face (Undrilled)
Test Pressure	Body: 2.4 Mpa (Hyd.), Seat: 1.6 Mpa (Hyd.)
Max. Working Temperature	45°C
Suitability	
Water, Oil	



Material Combination

S.No	Description	No.	Material
1	Body	1	Bronze
2	Wedge	1	Bronze
3	Stem	1	H.T. Brass
4	Bonnet	1	Bronze
5	Packing	-	Graphited Asbestos
6	Gland Flange	1	Bronze
7	Studs & Nuts for Gland	2 Each	Carbon Steel
8	Handwheel	1	C.I. / C.S.
9	Washer	1	Carbon Steel
10	Screw	1	Carbon Steel



Dimensional Data

Size (mm)	FF	H	ØW	ØFD	FT	k	n	Ød
15	72	138	60	95	6	65	4	14
20	76	147	60	105	6	75	4	14
25	90	155	70	115	8	85	4	14
32	100	185	79	140	8	100	4	18
40	110	225	87	150	9	110	4	18
50	120	235	96	165	11	125	4	18
65	140	280	104	185	13	145	4	18
80	150	352	140	200	13	160	8	18
100	190	415	183	220	16	180	8	18