

AV-288A Cast Carbon Steel Gate Valve, Flanged Ends, Class-300

Features

Product Standard	API 600
Testing Standard	API-598
Pressure / Class Rating	Class-300
Body Material Cum Standard	Cast Carbon Steel (ASTM A216 Gr. WCB)
Product Description	Bolted Bonnet, Outside Screw & Yoke Type, Rising Stem, Handwheel Operated
Type of Seat	Renewable Seat
Type of Wedge	Solid or Flexible Wedge
Trim	13% Cr. (SS 410)
End Details	Flanged Ends as per ASME B16.5 Class-300 Raised Face (Drilled)
Test Pressure	Body: 77 Bar (Hyd.), Seat: 57 Bar (Hyd.), Seat: 7 Bar (Air)
Max. Working Temperature	425°C



Notes

Test Certificate in Form III-C as per IBR is furnished with every supply.

Other trim material combinations are available on request.

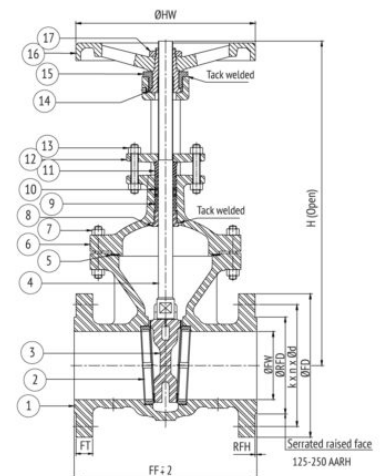
±3mm tolerance for sizes 300mm and above.

Suitability

Water, Steam, Oil

Material Combination

P.No.	Name of Part	Material	Specification
1	Body	C.C.S	ASTM A216 Gr. WCB
2	Body Seat Ring	C.C.S/ F.S.S.	ASTM A216 Gr. WCB + 13% Cr. Weld Deposit/ ASTM A182 Gr. F6a
3	Wedge	C.C.S/ C.S.S	ASTM A216 Gr. WCB + 13% Cr. Weld Deposit/ ASTM 217 Gr. CA15
4	Stem	Stainless Steel	ASTM A276 TYPE 410
5	Gasket	Spiral Wound S.S. 304 with Graphoil Filler With Inner Ring (C.S. or S.S. 304)	-
6	Bonnet	C.C.S	ASTM A216 Gr. WCB
7	Studs & Nuts	Alloy Steel/ H.T Steel	ASTM A193 Gr. B7/ASTM A194 Gr. 2H
8	Back Seat Bush	Stainless Steel	ASTM A276 TYPE 410
9	Gland Packing	Flexible Graphite (Min. 5 Rings)	-
10	Lantern Ring	S.S.	ASTM A276 TYPE 410
11	Gland Follower	Stainless Steel	ASTM A276 TYPE 410
12	Gland Flange	C.C.S./ C.S.	ASTM A216 Gr. WCB/ -
13	Gland Studs & Nuts	Alloy Steel/ H.T Steel	ASTM A193 Gr. B7/ASTM A194 Gr. 2H
14	Yoke Sleeve	Al. Bronze / S.S.	BS EN 1982 Gr. CC331G
15	Yoke sleeve Retaining Nut	Carbon Steel	-
16	Handwheel	D.I./ M.I.	ASTM A536 Gr. 80-55-06/ ASTM A338
17	Handwheel Retaining Nut	Carbon Steel	-
18	Gear Box Assembly	C.I.	-



k = P.C.D
n = No. of holes
Ød = Diameter of holes

Dimensional Data

Nominal Size (mm)	FF	FT	ØFW	ØRFD	RFH	ØFD	K	n	Ød	ØHW	H
25	165	15.9	25.4	50.8	2	125	88.9	4	3/4"	152	288
40	190	19.1	38.1	73	2	155	114.3	4	7/8"	210	410
50	216	20.7	50.8	92.1	2	165	127.0	8	3/4"	210	435
65	241	23.9	63.5	104.8	2	190	149.2	8	7/8"	210	495
80	282	27	76.2	127	2	210	168.3	8	7/8"	210	455
100	305	30.2	101.6	157.2	2	255	200	8	7/8"	300	620
125	381	33.4	127	185.7	2	280	235	8	7/8"	300	915
150	403	35	152.4	215.9	2	320	269.9	12	7/8"	400	875
200	419	39.7	203.2	269.9	2	380	330.2	12	1"	450	1160
250	457	46.1	254	323.8	2	445	387.4	16	1.1/8"	500	1455
300	502	49.3	304.8	381	2	520	450.8	16	1.1/4"	500	1600

k - P.C.D; n - Number of Holes; Ød - Diameter of Holes