

## AV-290 Cast Carbon Steel Swing Check Valve, Flanged Ends, Class-150

### Features

Product Standard	BS-1868
Testing Standard	API-598
Pressure / Class Rating	Class-150
Body Material Cum Standard	Cast Carbon Steel (ASTM A216 Gr. WCB)
Product Description	Bolted Cover
Type of Seat	Renewable Seat
Trim	13% Cr. (SS 410)
End Details	Flanged Ends as per ASME B16.5 Class-150 Raised Face (Drilled)
Test Pressure	Body: 30 Bar (Hyd.), Seat: 22 Bar (Hyd.), Seat: 7 Bar (Air)
Max. Working Temperature	425°C



### Notes

Test Certificate in Form III-C as per IBR is furnished with every supply.  
Other trim material combinations are available on request.

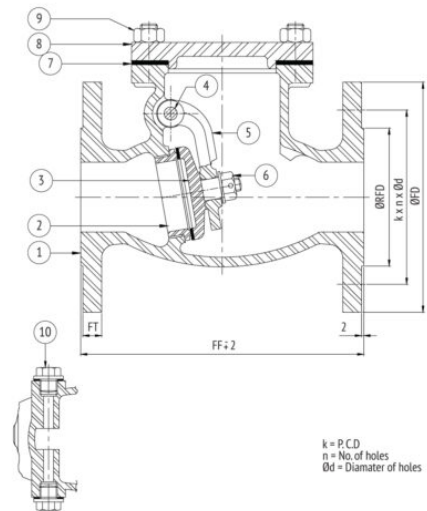
### Suitability

Water, Steam, Oil

### Material Combination

P.No.	Name of Part	Material	Specification
1	Body	C.C.S	ASTM A216 Gr. WCB
2	Body Seat Ring	S.S./ F.S.S./ C.C.S.	ASTM A276 TYPE 410/ ASTM A182 Gr. F6a/ ASTM A216 Gr. WCB + 13% Cr. Welded Deposit
3	Disc	C.C.S.	ASTM A216 Gr. WCB + 13% Cr. Welded Deposit
4	Hinge Pin	S.S.	ASTM A276 TYPE 410
5	Hinge	C.C.S.	ASTM A216 Gr. WCB
6	Nut	S.S.	AISI-410
7	Washer	Carbon Steel	-
8	Gasket	Spiral Wound S.S. 304 with Graphite Filler Inner Ring	-
9	Cover	C.C.S.	ASTM A216 Gr. WCB
10	Stud & Nuts	Alloy Steel/ H.T. Steel	ASTM A193 Gr. B7/ ASTM A194 Gr. 2H

NOTE : 1. This item can be supplied in WC6, WC9 material also.



### Dimensional Data

Nominal Size (mm)	FF	FT	ØRFD	ØFD	K	n	Ød
15	108	8	34.9	90	60.3	4	5/8"
20	117	8.9	42.9	100	69.9	4	5/8"
25	127	9.6	50.8	110	79.4	4	5/8"
40	165	12.7	73	125	98.4	4	5/8"
50	203	14.3	92.1	150	120.7	4	3/4"
65	216	15.9	104.8	180	139.7	4	3/4"
80	241	17.5	127	190	152.4	4	3/4"
100	292	22.3	157.2	230	190.5	8	3/4"
125	330	22.3	185.7	255	215.9	8	7/8"
150	356	23.9	215.9	280	241.3	8	7/8"
200	495	27	269.9	345	298.5	8	7/8"

k - P.C.D; n - Number of Holes; Ød - Diameter of Holes