

AV-290B Cast Carbon Steel Swing Check Valve, Flanged Ends, Class-600

Features

Product Standard	BS-1868
Testing Standard	API-598
Pressure / Class Rating	Class-600
Body Material Cum Standard	Cast Carbon Steel (ASTM A216 Gr. WCB)
Product Description	Bolted Cover
Type of Seat	Renewable Seat
Trim	13% Cr. (SS 410)
End Details	Flanged Ends as per ASME B16.5 Class-600 Raised Face (Drilled)
Test Pressure	Body: 153 Bar (Hyd.), Seat: 112 Bar (Hyd.), Seat: 7 Bar (Air)
Max. Working Temperature	425°C



Notes

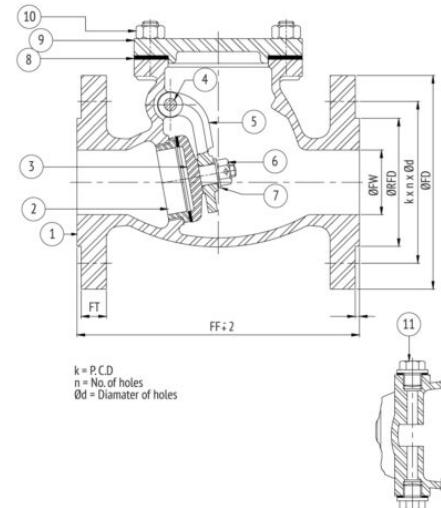
Test Certificate in Form III-C as per IBR is furnished with every supply.
Other trim material combinations are available on request.

Suitability

Water, Steam, Oil

Material Combination

P.No.	Name of Part	Material	Specification
1	Body	C.C.S	ASTM A216 Gr. WCB
2	Body Seat Ring	S.S./ F.S.S./ C.C.S.	ASTM A276 TYPE 410/ ASTM A182 Gr. F6a/ ASTM A216 Gr. WCB + 13% Cr. Deposit
3	Disc	C.C.S.	ASTM A216 Gr. WCB + 13% Cr. Deposit
4	Hinge Pin	S.S.	ASTM A276 TYPE 410
5	Hinge	C.C.S.	ASTM A216 Gr. WCB
6	Nut	S.S.	-
7	Washer	Carbon Steel	-
8	Gasket	Spiral Wound S.S. 304 with Graphite Filler Inner Ring	-
9	Cover	C.C.S.	ASTM A216 Gr. WCB
10	Stud & Nuts	Alloy Steel/ H.T. Steel	ASTM A193 Gr. B7/ ASTM A194 Gr. 2H
10	Side Plug	S.S.	ASTM A276 TYPE 410



Dimensional Data

Nominal Size (mm)	FF	ØFW	ØFD	ØRFD	FT	k	n	Ød
40	241	38	155	73	22.3	114.3	4	7/8"
50	292	51	165	92.1	25.4	127	8	3/4"
65	330	64	190	104.8	28.6	149.2	8	7/8"
80	356	76	210	127	31.8	168.3	8	7/8"
100	432	102	275	157.2	38.1	215.9	8	1"
125	508	127	330	185.7	44.5	266.7	8	1.1/8"
150	559	152	355	215.9	47.7	292.1	12	1.1/8"
200	660	200	420	269.9	55.6	349.2	12	1.1/4"
250	787	248	510	323.8	63.5	431.8	16	1.3/8"

k - P.C.D; n - Number of Holes; Ød - Diameter of Holes