

AV-103 Bronze Gate Valve, Flanged Ends, Class-1

Features

Product Standard	IS-778
Testing Standard	IS-778
Pressure / Class Rating	Class-1
Body Material Cum Standard	Bronze (IS 318 Gr. LTB2)
Product Description	Screwed in Bonnet, Inside Screw, Non-Rising Stem, Handwheel Operated
Type of Seat	Integral Seat
Type of Wedge	Solid Wedge
Trim	Cu-Alloy
End Details	Flanged Ends as per IS:778 Class-1 Flat Face (Undrilled)
Test Pressure	Body: 1.5 Mpa (Hyd.), Seat: 1.0 Mpa (Hyd.)
Max. Working Temperature	45°C

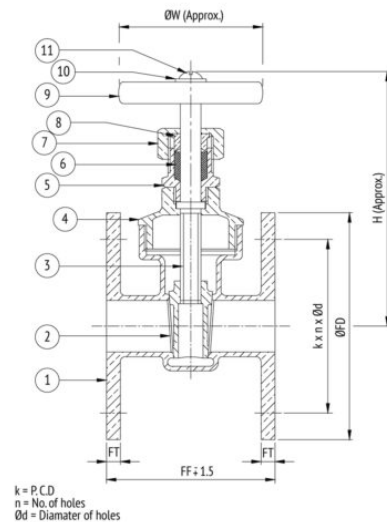
Suitability

Water, Oil



Material Combination

S.No	Description	No.	Material
1	Body	1	Bronze
2	Wedge	1	Bronze
3	Stem	1	H.T. Brass
4	Bonnet	1	Bronze
5	Stuffing Box	1	Bronze
6	Packing	-	Hemp & Jute / Asbestos
7	Gland Nut	1	Bronze
8	Gland	1	Bronze
9	Handwheel	1	C.I. / D.I.
10	Washer	1	Carbon Steel
11	Screw	1	Carbon Steel



Dimensional Data

Size (mm)	FF	H	ØW	ØFD	FT	k	Ød	n
15	72	100	53	95	6	65	14	4
20	76	110	60	105	6	75	14	4
25	90	130	70	115	8	85	14	4
32	100	144	80	140	8	100	18	4
40	110	160	87	150	9	110	18	4
50	120	175	98	165	11	125	18	4
65	140	222	104	185	13	145	18	4
80	150	248	140	200	13	160	18	8
100	190	310	183	220	16	180	18	8