

## AV-288 Cast Carbon Steel Gate Valve, Flanged Ends, Class-150

### Features

Product Standard	API 600
Testing Standard	API-598
Pressure / Class Rating	Class-150
Body Material Cum Standard	Cast Carbon Steel (ASTM A216 Gr. WCB)
Product Description	Bolted Bonnet, Outside Screw & Yoke Type, Rising Stem, Handwheel Operated
Type of Seat	Renewable Seat
Type of Wedge	Solid or Flexible Wedge
Trim	13% Cr. (SS 410)
End Details	Flanged Ends as per ASME B16.5 Class-150 Raised Face (Drilled)
Test Pressure	Body: 30 Bar (Hyd.), Seat: 22 Bar (Hyd.), Seat: 7 Bar (Air)
Max. Working Temperature	425°C



### Notes

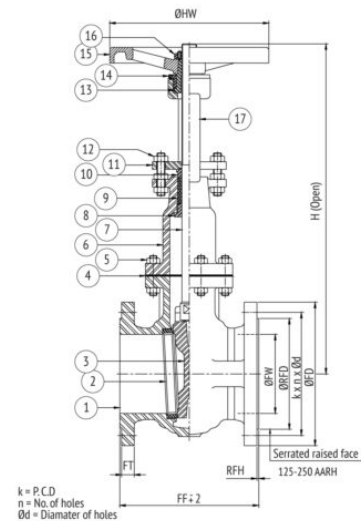
Test Certificate in Form III-C as per IBR is furnished with every supply.  
Other trim material combinations are available on request.  
±3mm tolerance for sizes 300mm and above.

### Suitability

Water, Steam, Oil

### Material Combination

S.No	Description	No.	Material
1	Body	1	C.C.S.
2	Body Seat Ring	1	C.C.S. / F.S.S.
3	Wedge	1	C.C.S. / C.S.S.
4	Gasket	1	S.S. 304 Graphoil Filler with Inner Ring (C.S. or S.S.304)
5	Studs & Nuts	To Suit	Alloy Steel / H.T. Steel
6	Bonnet	1	C.C.S.
7, 8	Stem, Back Seat Bush	1	Stainless Steel
9	Gland Packing	-	Flexible Graphite (Min. 5 Rings)
10	Gland Follower	1	Stainless Steel
11	Gland Flange	1	C.C.S.
12	Gland Studs & Nuts	2 / 4	Alloy Steel / H.T. Steel
13	Yoke Sleeve	1	Al. Bronze / S.S.
14	Yoke Sleeve Retaining Nut	1	Carbon Steel
15	Handwheel	1	M.I. / D.I.
16	Handwheel Retaining Nut	1	Carbon Steel
17	Yoke	1	C.C.S.



### Dimensional Data

Size (mm)	FF	FT	ØFW	ØRFD	RFH	ØFD	K	n	Ød	ØHW	H
15	108	8	15	34.9	2	90	60.3	4	5/8"	80	140
20	117	9	20	42.9	2	100	70	4	5/8"	80	165
25	127	9.6	25	50.8	2	110	79.5	4	5/8"	127	190
40	165	12.7	38.1	73	2	125	98.4	4	5/8"	210	365
50	178	14.3	50.8	92.1	2	150	120.7	4	3/4"	210	390
65	190	15.9	63.5	104.8	2	180	139.7	4	3/4"	210	440
80	203	17.5	76.2	127	2	190	152.4	4	3/4"	225	460
100	229	22.3	101.6	157.2	2	230	190.5	8	3/4"	225	570

Size (mm)	FF	FT	ØFW	ØRFD	RFH	ØFD	K	n	Ød	ØHW	H
125	254	22.3	127	185.7	2	255	215.9	8	7/8"	310	690
150	267	23.9	152.4	215.9	2	280	241.3	8	7/8"	310	780
200	292	27	203.2	269.9	2	345	298.5	8	7/8"	400	975
250	330	28.6	254	323.8	2	405	362	12	1"	460	1215
300	356	30.2	304.8	381	2	485	431.8	12	1"	500	1350
350	381	33.4	336.6	412.8	2	535	476.3	12	1.1/8"	450	1605
400	406	35	387.4	469.9	2	595	539.8	16	1.1/8"	450	1960
450	432	38.1	436.2	533.4	2	635	577.9	16	1.1/4"	450	2055
500	457	41.3	489	584.2	2	700	700	20	1.1/4"	450	2410
600	508	46.1	590.6	692.2	2	815	815	20	1.3/8"	450	2875