

AV-255 Cast Iron Horizontal Lift Check Valve, Flanged Ends, PN-16

Features

Type of Pattern	Right Angle Pattern
Testing Standard	BS EN 12266-Part 1
Body Material Cum Standard	Cast Iron (IBR 86 to 93 Gr. A)
Product Description	Bolted Cover
Type of Seat	Renewable Seat
Type of Disc	Renewable Disc
Trim	13% Cr. (SS 410)
End Details	Flanged Drilling as per BS-10 Table-H Raised Face (PN-16)
Test Pressure	Body: 24 kg/cm ² (Hyd.), Seat & Back Seat : 17.6 kg/cm ²
Max. Working Pressure	13 kg/cm ² (Steam)
Max. Working Temperature	220°C



Notes

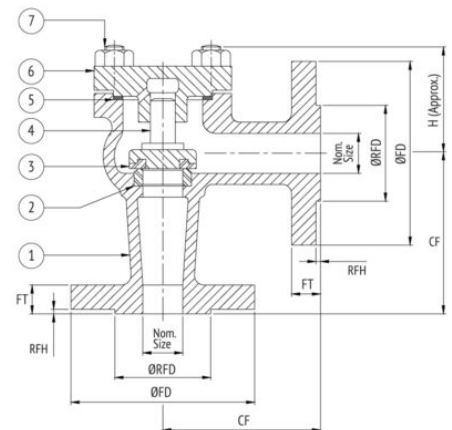
Test Certificate in Form III-C as per IBR is furnished with every supply.

Suitability

Water, Steam, Oil

Material Combination

S.No	Description	No.	Material
1	Body	1	Cast Iron
2	Body Seat Ring	1	Stainless Steel
3	Disc Ring	1	Stainless Steel
4	Disc Holder	1	Cast Iron
5	Gasket	1	C.A.F.
6	Cover	1	Cast Iron
7	Studs & Nuts	To Suit	Carbon Steel



Dimensional Data

Size (mm)	CF	H	ØFD	FT	ØRFD	RFH
15	90	60	114.3	14	46	2
20	95	60	114.3	16	56	2
25	100	62	115	16	65	3
32	105	70	140	18	76	3
40	115	75	150	18	84	3
50	125	80	165	20	99	3
65	145	100	185	20	118	3
80	155	110	203	22	132	3
100	175	120	228.6	24	156	3
125	200	130	279.4	26	184	3
150	225	150	304.8	26	211	3