



ATAM

Valves, Fittings & Boiler Mountings



Ball Valves

Product Range



**WHERE
SAFETY & RELIABILITY
COMES FIRST**

Atam Valves Limited

www.atamvalves.in

- Established in 1972
- ISO 9001, ISO 14001, ISI, IBR, PED certified with API 600, 602 & 6D in progress
- Inhouse R&D, Designing & mould making facilities
- Work force of more than 500 professionals
- Factories covering 500,000 SFT
- Wide range of machining & testing facilities
- Listed on "BSE (Bombay Stock Exchange)" since October 2020
- Leading manufacturer of precision-quality valve solutions, including GGC Valves, Ball valves, Butterfly valves, Steam Traps, NRV, PRV, Strainers, Boiler mounting / accessories & stainless steel fittings etc.
- Materials available include - DI, CI, CS, Forged Steel, Bronze, SS, NAB / AB etc.
- Meeting the needs of ever-demanding applications in - Steam engineering, O&G, Pharmaceutical, Marine, Mining, Water & Wastewater Mgt., Textile Mills, Sugar Mills, Food Processing, HVAC etc.
- Servicing conditions -192 C to 550 C & pressure rating up to 10,000 Lbs
- Extensive sales and distribution network in India and Abroad



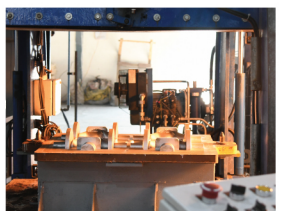
ATAM Valves is a recipient of
National Award for Quality Products
and
National Award for best efforts in Entrepreneurship

ATAM Valves is fully committed to its customer by offering the products that meet requirements and exceed the expectations.



Valves, Fittings & Boiler Mountings

Infrastructure



Union Bonnet Globe Valve No.9

AV-1	Bronze (Screwed) Class-150	8 - 100 mm
IC-1	S.S. (Screwed) PN-25	15 - 50 mm
AV-2	Bronze (Flanged) Class-150	15 - 100 mm


**W
S
G
O
A**
Globe Valve No.5 & No.10

AV-6	Bronze (Screwed) PN-20	8 - 100 mm
IC-6	S.S. (Screwed) PN-20	15 - 50 mm


**W
S
G
O
A**
Globe Valve No.4 & No.8

AV-8	Bronze (Screwed) PN-16	15 - 50 mm
AV-41	Bronze (Flanged) PN-16	15 - 200 mm


**W
S
G
O
A**
Horizontal Lift Check Valve No.4

AV-7	Bronze (Screwed) PN-16	15 - 100 mm
IC-51	S.S. (Screwed) PN-16	15 - 50 mm
AV-55	Bronze (Flanged) PN-16	15 - 100 mm


**W
S
G
O
A**
Horizontal Lift Check Valve No.5 & No.10

AV-27	Bronze (Screwed) PN-20	15 - 100 mm
IC-29	S.S. (Screwed) PN-25	15 - 50 mm


**W
S
G
O
A**
Union Cover Horizontal Lift Check Valve No.9

AV-34	Bronze (Screwed) PN-20	15 - 100 mm
IC-34	S.S. (Screwed) PN-25	15 - 50 mm
AV-53	Bronze (Flanged) PN-20	15 - 100 mm


**W
S
G
O
A**
Angle Check Valve Right Angle Pattern

AV-26	Bronze (Screwed) PN-16	15 - 50 mm
--------------	------------------------	------------


**W
S
G
O
A**
Thermodynamic Steam Trap

AV-12	Bronze (Screwed)	15 - 50 mm
--------------	------------------	------------


**W
S
G
O
A**
Y-Type Strainer

AV-14	Bronze (Screwed)	15 - 65 mm
IC-14	S.S. (Screwed)	15 - 50 mm


**W
S
G
O
A**

Gland Packed Water Level Gauge

AV-16A	Bronze (Screwed)	10 - 20 mm
AV-17	Bronze (Flanged)	10 - 20 mm


**W
S
G
O
A**

Asbestos Packed also available

Sight Flow Indicator

AV-31	Bronze (Screwed)	15 - 50 mm
AV-32	Bronze (Screwed)	15 - 40 mm


**W
S
G
O
A**
Pressure Relief Valve Open / Closed Discharge

AV-36	Bronze (Screwed)	15 - 50 mm
AV-37	Bronze (Screwed)	15 - 80 mm


**W
S
G
O
A**
Globe Valve No.4

AV-40	Bronze (Screwed) PN-16	8 - 100 mm
IC-40	S.S. (Screwed) PN-16	15 - 50 mm


**W
S
G
O
A**
Gland Cock

AV-57	Bronze (Screwed)	15 - 50 mm
AV-63	Bronze (Flanged)	15 - 100 mm


**W
S
G
O
A**
Plug Cock (Main Cock)

AV-64	Bronze (Screwed)	10 - 80 mm
AV-60	Bronze (Flanged)	15 - 100 mm


**W
S
G
O
A**
Angle Globe Valve No.4 Right Angle Pattern

AV-70	Bronze (Screwed) PN-16	8 - 50 mm
--------------	------------------------	-----------


**W
S
G
O
A**
Gate Valve Pegular Type / Non-Rising Stem

AV-75	Bronze (Screwed)	8 - 150 mm
IC-99	S.S. (Screwed)	15 - 50 mm
AV-73	Bronze (Flanged)	15 - 150 mm


**W
S
G
O
A**
Multi Utility Check Valve

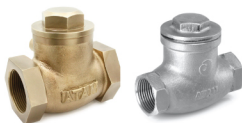
IC-87	S.S. (Screwed)	15 - 50 mm
--------------	----------------	------------


**W
S
G
O
A**

Gate Valve Rising Stem
AV-110 Bronze (Screwed) 15 - 100 mm

 W
S
G
O
A

Swing Check Valve
AV-76 Bronze (Screwed) PN-16 15 - 50 mm

IC-76 S.S. (Screwed) PN-16 15 - 50 mm

 W
S
G
O
A

Vertical Lift Check Valve One / Two Piece Design
AV-79 Bronze (Screwed) 15 - 100 mm

IC-79 S.S. (Screwed) 15 - 50 mm

AV-80 Bronze (Screwed) PN-20 15 - 80 mm

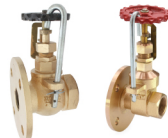
 W
S
G
O
A

Foot Valve (Screwed)
AV-86 Bronze PN 20 15 - 200 mm

AV-90 Bronze (Hole Type) PN 20 15 - 80 mm

 W
S
G
O
A

Globe / Gate Valve with Indicator & Pad Locking Arrangement
AV-92 Bronze 15 - 50 mm

AV-92A Bronze 15 - 50 mm

 W
S
G
O
A

Gate / Globe Valve with Indicator & Pad Locking Arrangement
AV-93 Bronze (Flanged) 15 - 150 mm

AV-94 Bronze (Flanged) 15 - 100 mm

 W
S
G
O
A

Butterfly Valve
AV-96A Cast Iron (S.S. Disc) Class-125 ISI 25 - 300 mm

AV-96B Cast Iron (S.G. Iron Disc) Class-125 ISI 25 - 300 mm

AV-96C Cast Steel (S.S. Disc) Class-125 25 - 300 mm

AV-96D Cast Iron (S.G. Iron Disc) PN-16 ISI 25 - 300 mm

AV-96E Cast Iron (S.S. Disc) PN-16 ISI 25 - 350 mm

AV-96F Cast Steel PN-40 25 - 300 mm

AV-96G Ductile Iron PN-25 (S.G. Iron Disc) 25 - 300 mm

AV-96H Ductile Iron PN-25 (S.S. Disc) 25 - 300 mm

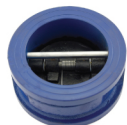
 W
S
G
O
A

Also Available with Actuator & Limit Switch
Valves Sizes 8" & above are available with Gear Arrangement.

Flap Non Return Valve
AV-97 S.G.Iron PN-16 40 - 300 mm

 W
S
G
O
A

Kinetic Type Air Release Valve
AV-128 Cast Iron (Flanged) PN-1.0 40 - 200 mm

**W
S
G
O
A**
Dual Plate Check Valve
AV-131 Cast Iron Class-125 50 - 300 mm

**W
S
G
O
A**

Vertical Lift Check Valve
AV-101 Bronze (Screwed) Class-1 15 - 100 mm

**W
S
G
O
A**
Gate Valve
AV-102 Bronze (Screwed) Class-1 15 - 100 mm
AV-103 Bronze (Flanged) Class-1 15 - 100 mm
AV-111 Bronze (Screwed) Class-2 15 - 100 mm
AV-112 Bronze (Flanged) Class-2 15 - 100 mm

**W
S
G
O
A**
Globe Valve
AV-104 Bronze (Flanged) Class-1 15 - 100 mm
AV-105 Bronze (Screwed) Class-1 15 - 100 mm
AV-113 Bronze (Flanged) Class-2 15 - 100 mm
AV-114 Bronze (Screwed) Class-2 15 - 100 mm

**W
S
G
O
A**
Horizontal Lift Check Valve
AV-106 Bronze (Screwed) Class-1 15 - 100 mm
AV-107 Bronze (Flanged) Class-1 15 - 100 mm

**W
S
G
O
A**
Gate Valve Yoke Type
AV-120 Bronze (Screwed) Class-1 15 - 100 mm
AV-121 Bronze (Flanged) Class-1 15 - 100 mm
AV-122 Bronze (Screwed) Class-2 15 - 100 mm
AV-123 Bronze (Flanged) Class-2 15 - 100 mm

**W
S
G
O
A**
Globe Valve Yoke Type
AV-124 Bronze (Screwed) Class-1 15 - 100 mm
AV-125 Bronze (Flanged) Class-1 15 - 100 mm
AV-126 Bronze (Screwed) Class-2 15 - 100 mm
AV-127 Bronze (Flanged) Class-2 15 - 100 mm

**W
S
G
O
A**

Sluice Valve

- AV-117** Cast Iron (Flanged) PN-1.0 50 - 600 mm
AV-117A Cast Iron (Flanged) PN-1.6 50 - 600 mm


 W
S
G
O
A

Gate Valve

- AV-118** Cast Iron (Flanged) PN-1.0 50 - 600 mm
AV-118A Cast Iron (Flanged) PN-1.6 50 - 600 mm


 W
S
G
O
A

Reflux (Non-Return) Valve

- AV-119** Cast Iron (Flanged) PN-1.0 50 - 500 mm
AV-119A Cast Iron (Flanged) PN-1.6 50 - 500 mm


 W
S
G
O
A

Resilient Seated Gate Valve

- AV-129** Ductile Iron (Flanged) 50 - 800 mm
 PN-10 / PN-16


 W
S
G
O
A

Balancing Valve

- AV-130** Cast Iron (Flanged) Class-150 25 - 600 mm
 (Also available in different material & pressure classes)


 W
S
G
O
A


Ball Valves

Ball Valves
Ball Valve Two Piece Design

- FV-501** Bronze (Screwed) PN-20 8 - 100 mm
FV-502 Bronze (Flanged) PN-16 15 - 125 mm


 W
S
G
O
A

Ball Valve Two / Three Piece Design

- FV-503** Cast Iron (Screwed) Class-125 15 - 100 mm
FV-504 Cast Iron (Flanged) 3Pc. Design 15 - 200 mm


 W
S
G
O
A

Ball Valve with Strainer One Piece Design

- FV-506** Bronze (Screwed) PN-20 15 - 50 mm


 W
S
G
O
A

Ball Valve Two / Three Piece Design

FV-507	S.S. (Screwed) CF8	6 - 50 mm
FV-508	S.S. (Screwed) CF8M	6 - 50 mm
FV-509	S.S. (Flanged) CF8M 3Pc.	15 - 100 mm
FV-510	S.S. (Flanged) CF8 3Pc.	15 - 100 mm


 W
S
G
O
A

Ball Valve One Piece Design

FV-511	S.S. (Screwed) CF8	15 - 50 mm
FV-512	S.S. (Screwed) CF8M	15 - 50 mm


 W
S
G
O
A

Ball Valve Three Piece Design

FV-513	S.S. (Screwed) CF8	15 - 50 mm
FV-514	S.S. (Screwed) CF8M	15 - 50 mm


 W
S
G
O
A

Ball Valve Three Piece Design

FV-515	C.C.S. (Screwed) WCB Class-800	15 - 50 mm
FV-516	C.C.S. (Flanged) WCB Class-150	15 - 100 mm
FV-516A	C.C.S. (Flanged) WCB Class-150 (2Pc. Design)	15 - 100 mm


 W
S
G
O
A


Valves, Fittings & Boiler Mountings

 IBR
Approved

Bronze Valves

Globe Steam Stop Valve

AV-201	Bronze (Screwed)	15 - 50 mm
AV-202	Bronze (Flanged) Table-H	15 - 50 mm
AV-202A	Bronze (Flanged) Table-F	15 - 50 mm


 W
S
G
O
A

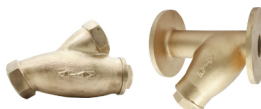
Auxiliary Steam Stop Valve

AV-203	Bronze (Screwed)	15 - 50 mm
AV-204	Bronze (Flanged) Table-H	15 - 50 mm
AV-204A	Bronze (Flanged) Table-F	15 - 50 mm


 W
S
G
O
A

Y-Type Strainer

AV-208	Bronze (Screwed)	15 - 50 mm
AV-209	Bronze (Flanged)	15 - 50 mm


 W
S
G
O
A

Horizontal Lift Check Valve

AV-210	Bronze (Screwed)	15 - 50 mm
AV-211	Bronze (Flanged)	15 - 50 mm


 W
S
G
O
A

Sleeve Packed Water Level Gauge

- AV-214** Bronze (Flanged) - IBR 15 - 20 mm
AV-281 Cast Carbon Steel (Flanged) 20 mm


W
S
G
O
A
Thermodynamic Steam Trap

- AV-220** Bronze (Screwed) 15 - 25 mm
AV-270 Stainless Steel (Screwed) 15 - 50 mm
AV-300 Drop Forged S.S. (Screwed) 15 - 25 mm


W
S
G
O
A
Parallel Slide Blow Off Valve

- AV-221** Bronze (Flanged) 25 - 80 mm
AV-278 Cast Carbon Steel (Flanged) Table-J 25 - 65 mm
AV-278A Cast Carbon Steel (Flanged) Class-300 25 - 65 mm


W
S
G
O
A
Fusible Plug One / Two Piece / Loco Type Design

- AV-222** Bronze (Screwed) - Two Piece 15 - 50 mm
AV-223 Bronze (Screwed) - One Piece 15 - 25 mm
AV-242 Bronze (Screwed) - Loco Type 25 - 32 mm


W
S
G
O
A
Vertical Non-Return Valve Two Piece Design

- AV-227** Bronze (Screwed) 15 - 50 mm
AV-228 Bronze (Flanged) 15 - 50 mm


W
S
G
O
A
Pressure Reducing Valve Diaphragm Type

- AV-229** Bronze (Screwed) 15 - 50 mm


W
S
G
O
A
Safety Valve Open / Enclosed Discharge

- AV-230** Right Angle - Enclosed (S/E) 15 - 50 mm
AV-231 Open (S/E)
AV-232 Pop Type - Open (S/E), **AV-233** Pop Type - Open (F/E)
AV-234 Right Angle Pop Type - Enclosed (S/E), **AV-235** Right Angle Pop Type - Enclosed (F/E)


W
S
G
O
A
Sight Flow Indicator Single Window

- AV-238** Bronze (Screwed) 15 - 50 mm


W
S
G
O
A
Inspector's Test / Pressure Gauge Cock

- AV-239** Bronze (Screwed) 10 - 15 mm
AV-241 Bronze (Screwed) 10 - 15 mm


W
S
G
O
A

Globe / Junction Steam Stop Valve

AV-251	Cast Iron (Flanged) PN-16	15 - 150 mm
AV-252	Cast Iron (Flanged) PN-16	15 - 150 mm


W
S
G
O
A
Horizontal Lift Check Valve - Straight / Right Angle Pattern

AV-253	Cast Iron (Flanged) PN-16	15 - 150 mm
AV-255	Cast Iron (Flanged) PN-16	15 - 150 mm


W
S
G
O
A
Y-Type Strainer

AV-256	Cast Iron (Flanged)	25 - 200 mm
AV-257	Cast Iron (Screwed)	15 - 50 mm


W
S
G
O
A
Accessible Feed Check Valve Straight / Right Angle Pattern

AV-258	Cast Iron (Flanged)	25 - 65 mm
---------------	---------------------	------------


W
S
G
O
A
Stop Cum Non-Return Valve Straight / Right Angle Pattern

AV-259	Cast Iron (Flanged) PN-16	15 - 200 mm
---------------	---------------------------	-------------


W
S
G
O
A
Vertical Inverted Bucket Type Steam Trap

AV-260	Cast Iron (Screwed)	15 - 50 mm
---------------	---------------------	------------


W
S
G
O
A
Single / Double Post Hi-Lift Safety Valve Right Angle Pattern

AV-261	Cast Iron (Flanged)	25 - 50 mm
AV-262	Cast Iron (Flanged)	25 - 50 mm


W
S
G
O
A
Pilot Operated Pressure Reducing Valve

AV-263	Cast Iron (Flanged)	25 - 50 mm
AV-287	Cast Carbon Steel (Flanged)	25 - 50 mm


W
S
G
O
A
Moisture Separator

AV-264	Cast Iron (Flanged)	25 - 150 mm
AV-291	Cast Carbon Steel (Flanged)	25 - 150 mm


W
S
G
O
A

Non-Slam Check Valve

AV-268	Stainless Steel Class-150	15 - 100 mm
AV-268A	Stainless Steel Class-300	15 - 100 mm


W
S
G
O
A
Ball Float Steam Trap

AV-269	Cast Iron (Screwed)	15 - 50 mm
---------------	---------------------	------------


W
S
G
O
A
Piston Valve

AV-271	Cast Carbon Steel (Flanged) PN-40	25 - 100 mm
AV-271A	Cast Carbon Steel (Flanged) Class-150	25 - 100 mm
AV-271B	Cast Carbon Steel (Flanged) Class-300	25 - 100 mm

Suitable for : Super Heated Steam, Condensate, Thermic Fluid, Hydro Carbon Chemical


W
S
G
O
A
Globe Steam Stop Valve Straight / Right Angle Pattern

AV-276	Cast Carbon Steel (Flanged) PN-40	15 - 300 mm
AV-280	Cast Carbon Steel (Flanged) PN-40	25 - 150 mm


W
S
G
O
A
Horizontal Lift Check Valve

AV-277	Cast Carbon Steel (Flanged) PN-40	15 - 250 mm
---------------	-----------------------------------	-------------


W
S
G
O
A
Y-Type Strainer

AV-279	Cast Carbon Steel (Flanged) Table-J	25 - 250 mm
AV-279A	Cast Carbon Steel (Flanged) Class-300	25 - 250 mm
AV-279C	Cast Carbon Steel (Flanged) Class-150	25 - 250 mm


W
S
G
O
A
Stop Cum Non Return Valve Straight / Right Angle Pattern

AV-280	Cast Carbon Steel (Flanged) PN-40	25 - 150 mm
AV-280A	Cast Carbon Steel (Flanged) PN-40	25 - 150 mm


W
S
G
O
A
Accessible Feed Check Valve

AV-282	Cast Carbon Steel (Flanged)	25 - 80 mm
---------------	-----------------------------	------------


W
S
G
O
A
Single / Double Post Hi-Lift / Full Lift Safety Valve - Flanged

AV-283	Cast Carbon Steel (Single Post)	25 - 50 mm
AV-284	Cast Carbon Steel (Double Post)	25 - 50 mm
AV-285	Cast Carbon Steel (Full Lift)	25 x 40 - 100 x 50 mm



Cast Steel Valves

Gate Valve

AV-288	Cast Carbon Steel (Flanged) Class-150	15 - 600 mm
AV-288A	Cast Carbon Steel (Flanged) Class-300	25 - 300 mm
AV-288B	Cast Carbon Steel (Flanged) Class-600	40 - 200 mm
AV-288C (Non IBR)	CCS (Flanged) Class-150 (Suitable for Thermic Fluid)	15 - 600 mm


W
S
G
O
A

Globe Valve

AV-289	Cast Carbon Steel (Flanged) Class-150	15 - 300 mm
AV-289A	Cast Carbon Steel (Flanged) Class-300	15 - 250 mm
AV-289B	Cast Carbon Steel (Flanged) Class-600	40 - 200 mm
AV-289C (Non IBR)	CCS (Flanged) Class-150 (Suitable for Thermic Fluid)	15 - 300 mm


W
S
G
O
A

Swing Check Valve

AV-290	Cast Carbon Steel (Flanged) Class-150	40 - 600 mm
AV-290A	Cast Carbon Steel (Flanged) Class-300	40 - 200 mm
AV-290B	Cast Carbon Steel (Flanged) Class-600	40 - 200 mm
AV-290C (Non IBR)	CCS (Flanged) Class-150 (Suitable for Thermic Fluid)	40 - 600 mm


W
S
G
O
A

Knife Edge Gate Valve

AV-288K	Cast Iron (Flanged) PN-10 / PN-16	50 - 600 mm
----------------	-----------------------------------	-------------

(Also available in different material & pressure classes, with Electrical & Pneumatic Actuator)

Suitable for : Slurry, Semisolid Fluid, Heavy Oils, Viscous Fluids



Control Valve

AV-289GC	Cast Carbon Steel (Flanged) Class-150	25 - 300 mm
-----------------	---------------------------------------	-------------

(Also available with Electrical & Pneumatic Actuator)


W
S
G
O
A

Forged Carbon Steel Valves

Gate Valve - AV301 & AV302 / Globe Valve - AV303 & AV304

AV-301	Drop Forged Steel (Screwed) Class-800	15 - 50 mm
AV-302	Drop Forged Steel (Socket Welded) Class-800	15 - 50 mm
AV-303	Drop Forged Steel (Screwed) Class-800	15 - 50 mm
AV-304	Drop Forged Steel (Socket Welded) Class-800	15 - 50 mm


W
S
G
O
A

Horizontal Lift Check Valve

AV-305	Drop Forged Steel (Screwed) Class-800	15 - 50 mm
AV-306	Drop Forged Steel (Socket Welded) Class-800	15 - 50 mm


W
S
G
O
A

Needle Valve Regulating Type

AV-311	Drop Forged S.S. (Screwed) Class-800	15 mm
---------------	--------------------------------------	-------


W
S
G
O
A

Investment Casting Stainless Steel (CF8) Butterfly Handle Ball Valve

AV-504 S.S. (Screwed) PN-40 8 - 15 mm



W
S
G
O
A

Investment Casting Stainless Steel (CF8) Ball Valve

AV-505 S.S. (Screwed) PN-40 8 - 50 mm

AV-507 S.S. (Screwed) 8 - 80 mm

AV-510 S.S. (Flanged) Class-150 15 - 100 mm



W
S
G
O
A

Compact Pressure Reducing Valve (P.R.V)

IC-132 S.S (Screwed) PN-16 15-50mm



W
S
G
O
A

Test Drain Ball Valve

IC-31 S.S (Screwed) 300 Psi 15-50mm



W
S
G
O
A

Air Vent Valve

IC-33 S.S (Screwed) PN-10 15-25mm



W
S
G
O
A

Float Valve

IC-39 S.S (Screwed) PN-10 15-25mm



W
S
G
O
A

Concealed Ball Valve

IC-100 S.S (Screwed) PN-25 15-50mm



W
S
G
O
A

90° Elbow & Red. Elbow
AV-537 8 - 100 mm

AV-537A 8 - 100 mm

90° Tee & Red. Tee
AV-538 8 - 100 mm

AV-538A 8 - 100 mm

Street Elbow
AV-534 8 - 100 mm

Cross
AV-531 8 - 100 mm

Union
AV-540 8 - 100 mm

Round Cap
AV-529 8 - 100 mm

Square Plug / Dummy
AV-544 8 - 100 mm

Hex Nut
AV-532 8 - 100 mm

Hex Head Plug
AV-546 8 - 100 mm

Reducing Hex Bushing
AV-543 10x8 - 100x25 mm

Reducing Socket
AV-533 10x8 - 50x25 mm

Hex Nipple
AV-541 8 - 100 mm

Socket
AV-539 8 - 100 mm

Reducing Hex Nipple
AV-535 10x8 - 100x25 mm

Hose Nipple
AV-542 8 - 100 mm

Coupling
AV-547 8 - 100 mm

Hex Cap
AV-530 8 - 100 mm

Elbow Union
AV-536 10 - 50 mm

Elbow 45°
AV-545 8 - 100 mm




Valves, Fittings & Boiler Mountings



Ball Valves

Scan to view PDF Version



Atam Valves Limited
1051, Outside Industrial Area,
Jalandhar - 144004 Punjab. INDIA

Phone : +91 181 5001111 Fax : +91 181 2290611
Email : sales@atamfebi.com
www.atamvalves.in